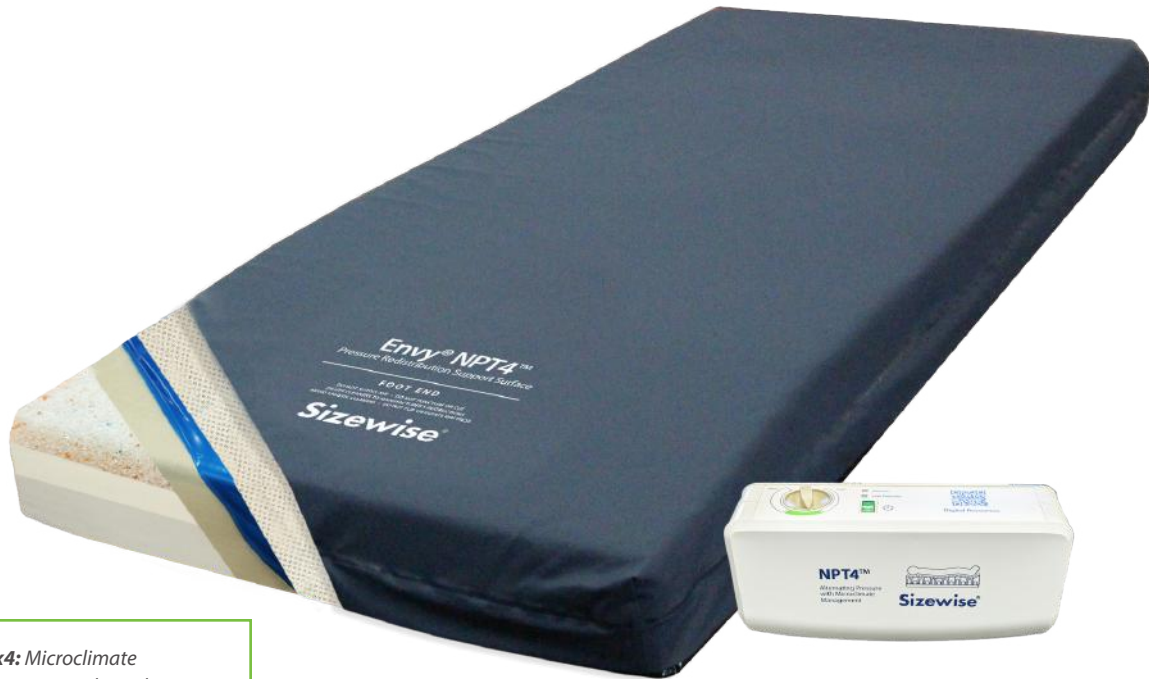


NPT4™

Advanced Support Surface with Microclimate Management



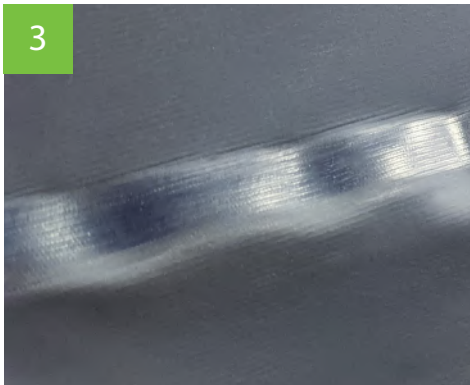
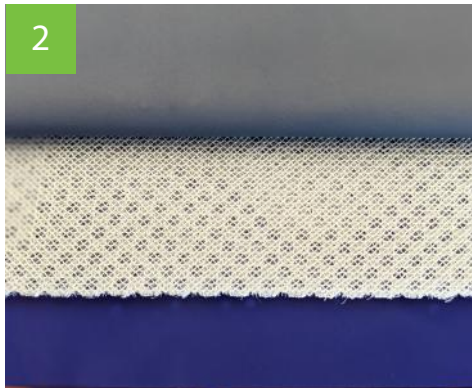
Technology x4: Microclimate Management pump, next-gen top cover, MAP Liner™, and copper-infused foam

NPT4™ introduces the latest advances in pressure redistribution foam support surfaces—with Microclimate Management (MCM) pump, next-gen fabric technology, and new CuPro™ copper-infused foam. The result: a hyper-responsive mattress which regulates patient temperature, reduces and treats pressure injuries, and stands up to the most demanding cleaning protocols. NPT4 is part of the Envy® line—made with materials that reduce chemicals of concern.

- Alternating pump with head-to-heel Microclimate Management
- Next-gen top cover with AirSpace™ 3D Mesh: provides high MVTR, advanced shear relief, and withstands harsh cleaning protocols
- CuPro™ copper-infused, thermoresponsive foam keeps the patient cool and comfortable while reacting to temperature and weight
- Available for most hospital bed frames

size wise.com 800-814-9389


Size wise®
Designed to heal



Key Specs

MATTRESS

| | |
|-------------------------------|-----------------------|
| Capacity | 500 lb./1,000 lb. |
| Mattress Weight (35") | 35 lb. |
| Width | 35", 39", 42", or 48" |
| Length | 80", 82", 84", or 86" |
| Number of Cells | 9 |
| Number of Zones | 3 |
| Custom Sizes | Available |
| Defined Perimeter Edge | Optional |
| Reinforced Evacuation Handles | Standard |
| Adapt™ Heel Zone (80-86") | Optional |

CONTROL UNIT (OPTIONAL)

| | |
|--------------------------|--------------|
| 1-in-2 Alternation | Standard |
| Microclimate Management | Standard |
| Liters of Air Per Minute | 8 |
| Firm/Soft Adjustable | Standard |
| Cycle Time | 5 min. |
| Alarm | Low Pressure |
| Unit Weight | 4 lb. |

FABRIC OPTIONS

| | |
|------------------------------------|----------|
| Extreme Polycarb 4-Way Stretch Top | Standard |
| AirSpace™ 3D Mesh | Standard |
| MAP Liner™ | Standard |
| Halogen-Free Fire Barrier | Standard |
| Non-Skid Polyurethane Bottom Cover | Standard |

FABRIC CHARACTERISTICS



4-Way Stretch



Chemical Resistant



Superior MVTR

- 1 — CuPro™ copper-infused, gel foam keeps the body cool while reacting to temperature and weight
- 2 — Top cover fabric, AirSpace™ 3D Mesh, and Mattress Asset Protection (MAP) Liner™ work together to keep the patient dry, reduce shear, and extend the life of the mattress
- 3 — Hospital cleaning protocols are no match for NPT4's high-tech design and construction: RF-welded seams mean no needle holes
- 4 — Convertible care: optional alternating pump provides enhanced Microclimate Management



Learn More:
Visit size wise.com/NPT4

size wise.com 800-814-9389

